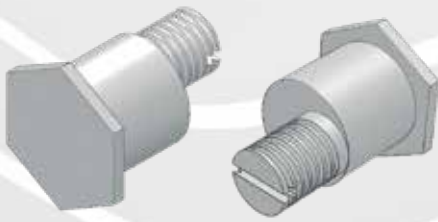
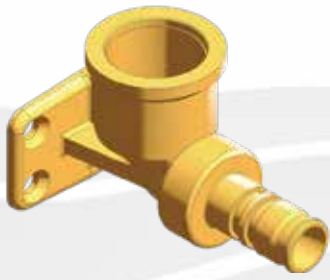




TAKAMAZ INDUS TRIAL

Part Machining Solutions



TAKAMAZ
INDUSTRIAL



CONTENTS

Part Machining Solutions

- 2 Models for Turning Work of Piping and Joint Parts
- 6 Models for Turning Work of Construction Materials and Parts
- 10 Examples of Completed Hand and Power Tool Parts
- 11 Models for Machining Parts for Hand and Power Tools
- 16 Models for Turning Work of Parts for Construction and Agricultural Machinery

Made by TAKAMAZ:

Piping and joint parts



Faucet parts
Internal temperature control
parts for bathroom use



Gas appliance parts



Piping parts for fire
extinguishers

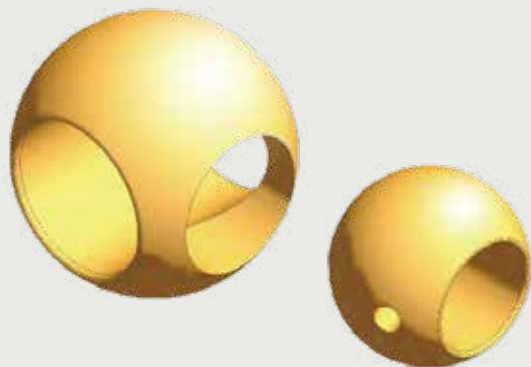


Parts for water meters



Snow-melting nozzle parts

Models for Turning Work of Piping and Joint Parts



Ball valves
【Material: Brass】



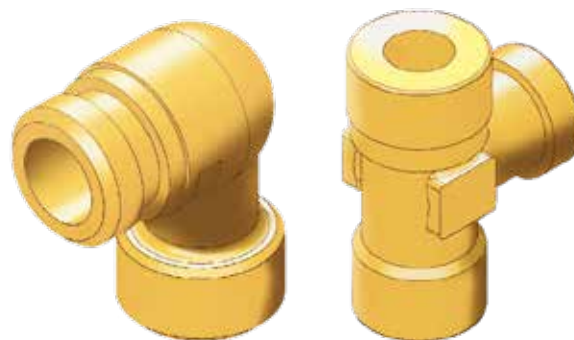
【Model with record of use】

TOP-TURN II



【Chuck】

TAKAMAZ TIC-DD

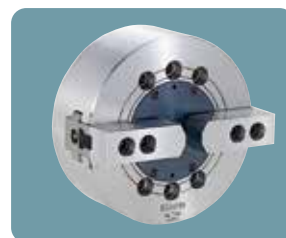


Shower elbow
【Material: Brass】



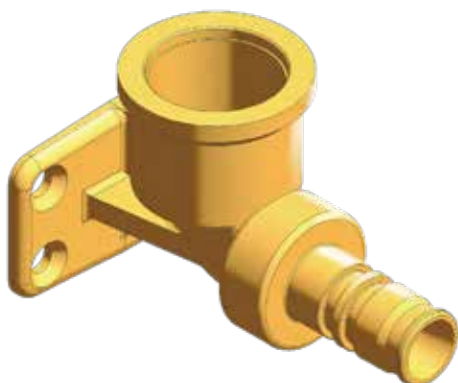
【Model with record of use】

XTS-6



【Chuck】

KITAGAWA NLT06 (2-jaw)



Elbow with a mount
【Material: Brass】



【Model with record of use】

XL-200



【Chuck】

JTEKT
「Indexing Chucks」: HSR-225



Valve case
【Material: PPS resin】



【Model with record of use】

XTS-6 · XY-120PLUS



【Chuck】

TAKAMAZ TSC-D26-ST

Models for Turning Work of Piping and Joint Parts



Z-type meter unit

【Material: Spheroidal graphite cast iron】



【Model with record of use】

XWT-8



【Chuck】

KITAGAWA B-206(3-jaw)



Welded joints

【Material: Carbon steel】



【Model with record of use】

XT-8



【Chuck】

KITAGAWA N-08(3-jaw)



Sockets

【Material: Bronze casting】



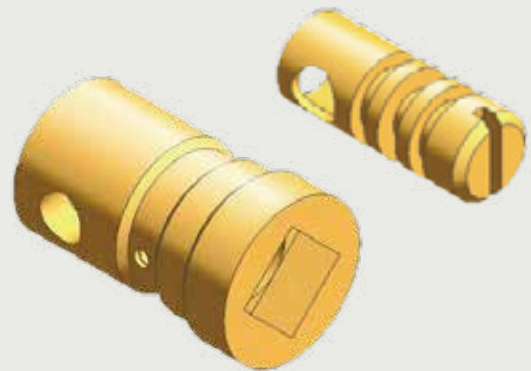
【Model with record of use】

XWT-8



【Chuck】

(左) OP-1 : KITAGAWA N-06(3-jaw)
(右) OP-2 : TAKAMAZ TIC1-N3



Valve case

【Material: Brass】



【Model with record of use】

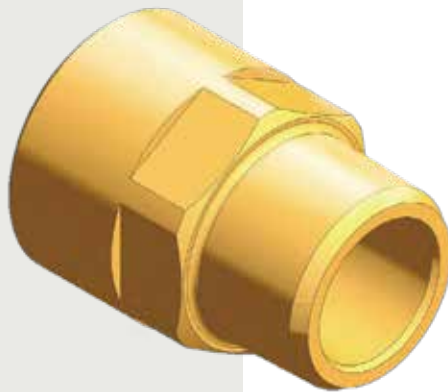
XT-8 · TOP-TURN II



【Chuck】

TAKAMAZ
TSC-D26-O60(Hi-grip)

Models for Turning Work of Piping and Joint Parts



Threaded sockets

【Material: Brass】



OP-1: **XWT-8**



OP-2: **XT-6**



RIKEN SEIKI SAD-50



KITAGAWA N-06



A4 box joints

【Material: Bronze casting】



【Model with record of use】

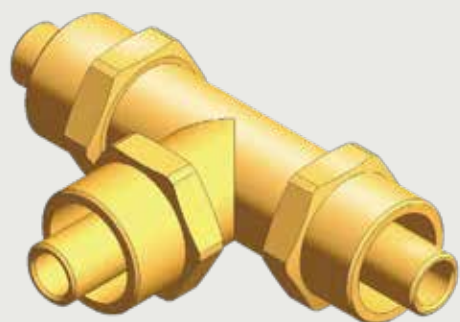
XL-200



【Chuck】

JTEKT

「Indexing Chucks」: HSR-225



XPE joints

【Material: Brass】



【Model with record of use】

XT-8M



【Chuck】

JTEKT

「Indexing Chucks」: HSR-225

Made by TAKAMAZ:
Construction
Materials
and Parts



Parts for door knobs
and door closers



Lighting fixture parts



Compressor parts



Elevator door parts



Rebar parts

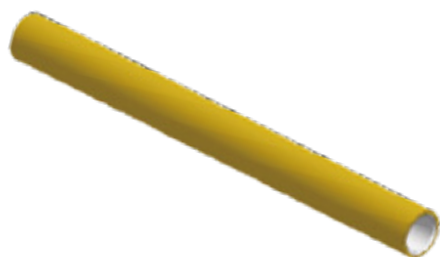


Parts for bolts for tunnels



Fiber optic cable relay
box parts

Models for Turning Work of Construction Materials and Parts



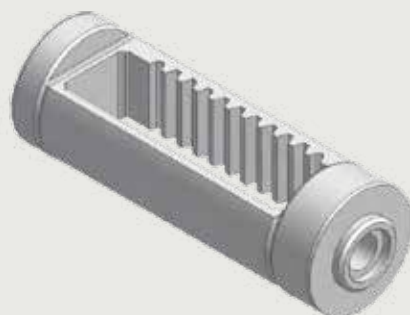
Handles

【Material: Vinyl chloride + aluminum】



【Model with record of use】

XT-6M



Pistons

【Material: Carbon steel】



【Model with record of use】

OP-1: **XT-8** OP-2, OP-3: **XD-10i**



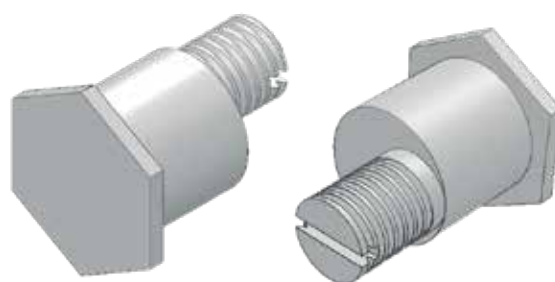
Base insulators

【Material: Ceramic】



【Model with record of use】

XT-6M



Special spiral bolts

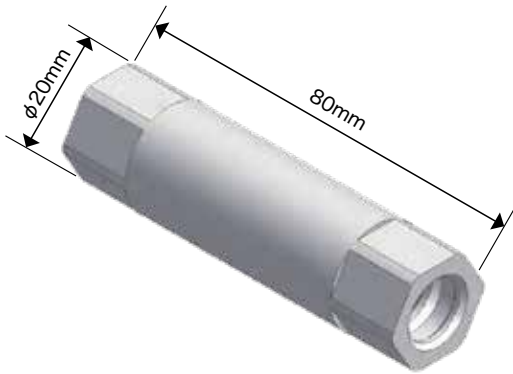
【Material: Stainless steel】



【Model with record of use】

XY-120PLUS

Models for Turning Work of Construction Materials and Parts



Couplers with bottom

【Material: Carbon steel】



【Model with record of use】

XTS-6 • XT-8



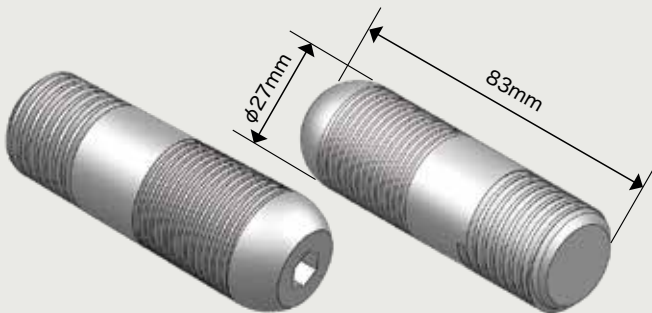
Nuts

【Material: Stainless steel】



【Model with record of use】

XT-8



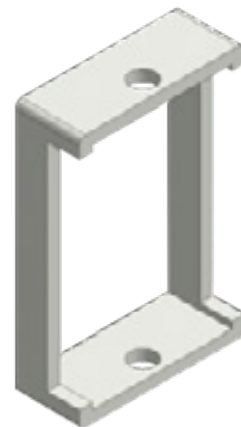
Pins

【Material: Chrome molybdenum steel】



【Model with record of use】

XT-8



Frames

【Material: Kovar alloy】



【Model with record of use】

XT-8

Models for Turning Work of Construction Materials and Parts



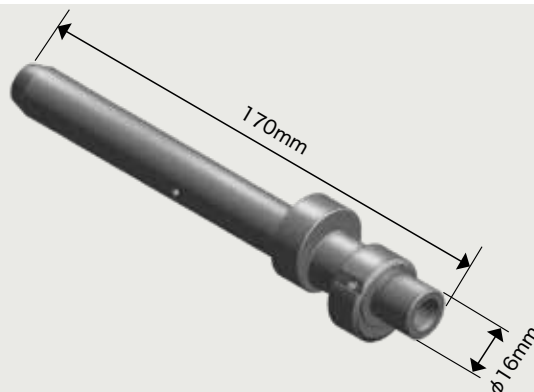
Scrolls

【Material: Composite material comprising fluoropolymer + copper + gray cast iron】



【Model with record of use】

XT-8M



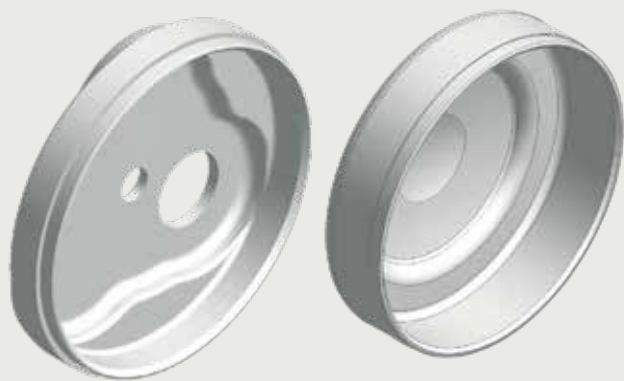
Crankshafts

【Material: Spheroidal graphite cast iron】



【Model with record of use】

XT-8



Housings

【Material: High-tensile strength steel】



【Model with record of use】

XT-6



Rotors

【Material: Soft magnetic iron】

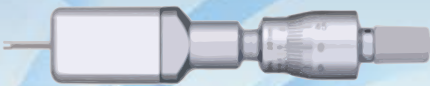


【Model with record of use】

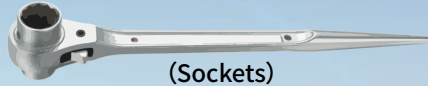
XT-8 · XY-120PLUS

Parts for Hand and Power Tools (Example of finished product)

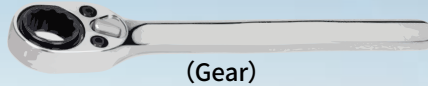
Inner diameter measuring instruments



Ratchet wrenches



(Sockets)



(Gear)

Torque wrenches

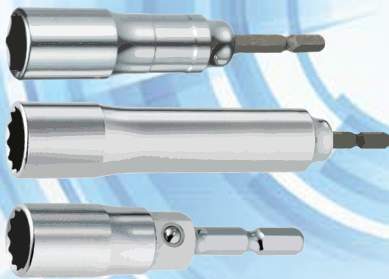


(Ratchet)

Impact drill parts



Sockets for power drills

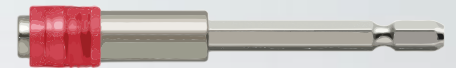


Hammers



(Cap)

Hexagon socket head holders



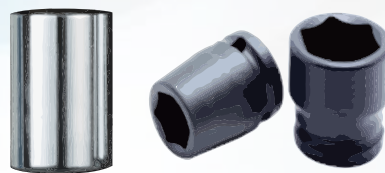
Screwdriver bits



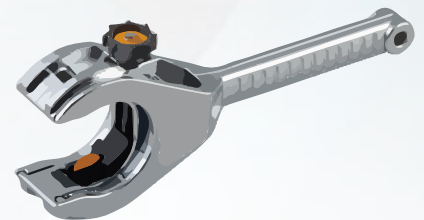
Sockets for impact wrenches



Sockets



Large ratchet pipe cutters



Sleeve and rebar binding machines



Small devices such as electric screwdrivers



(Bearing boxes for motors)

Welding machines



Models for Machining Parts for Hand and Power Tools



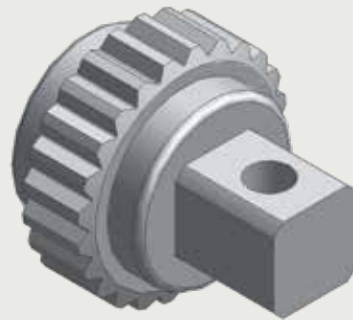
Outer cylinders

【Material: Free-cutting brass】



【Model with record of use】

XY-120PLUS



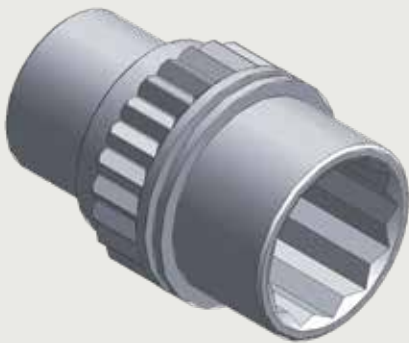
Ratchet

【Material: Chrome molybdenum steel】



【Model with record of use】

XD-10i



Ratchet

【Material: Chrome vanadium alloy steel】



【Model with record of use】

XT-6



Sockets

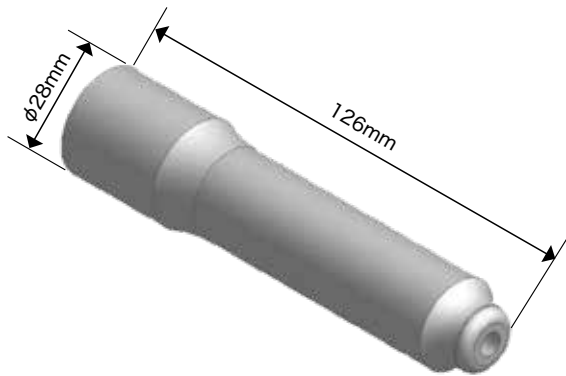
【Material: Chrome molybdenum steel】



【Model with record of use】

XT-6

Models for Machining Parts for Hand and Power Tools



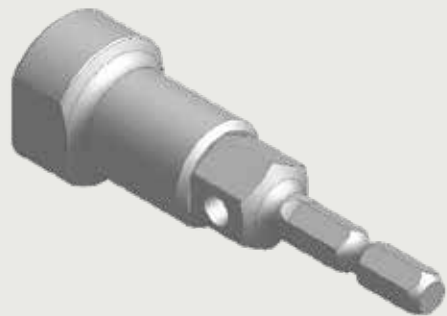
Sockets

【Material: Carbon steel】



【Model with record of use】

XT-8



Sockets

【Material: Carbon steel】



【Model with record of use】

XT-8



Sockets

【Material: Chrome molybdenum steel】



【Model with record of use】

XTS-6



Sockets

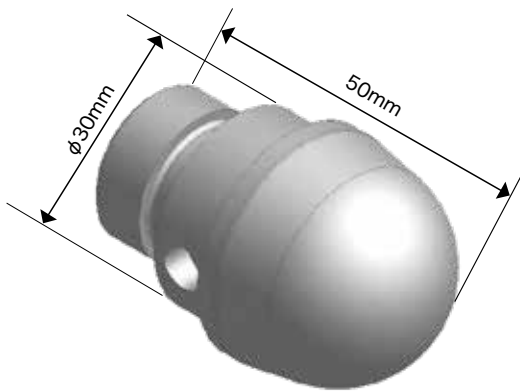
【Material: Carbon steel】



【Model with record of use】

XTS-6

Models for Machining Parts for Hand and Power Tools



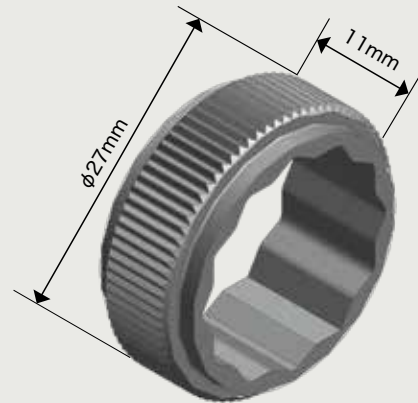
Cap

【Material: Spring steel】



【Model with record of use】

XTS-6



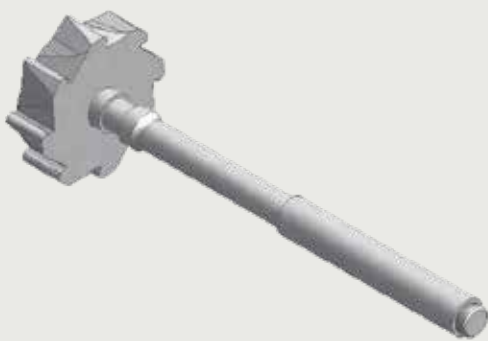
Gear

【Material: Carbon steel for forging】



【Model with record of use】

X-120



Bolts

【Material: Chrome molybdenum steel】



【Model with record of use】

XT-6



Screwdriver bits/ball points

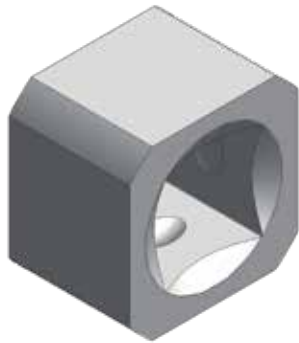
【Material: Chrome molybdenum steel】



【Model with record of use】

POLYGON MACHINE

Models for Machining Parts for Hand and Power Tools



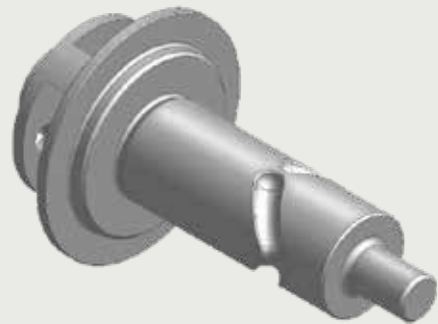
Special tetragonal pipes

【Material: Chrome steel】



【Model with record of use】

XT-6M



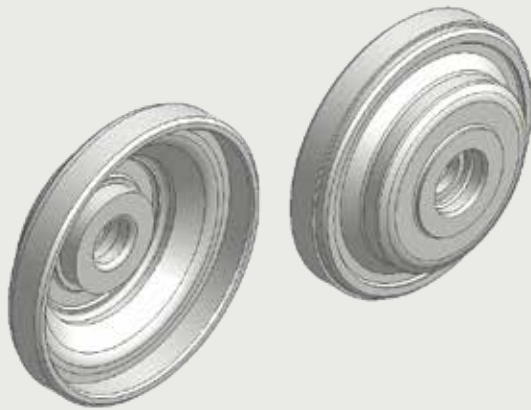
Gear

【Material: Case-hardened steel】



【Model with record of use】

XYT-51



Bearing boxes

【Material: Diecast aluminum】



【Model with record of use】

XW-60



Bits

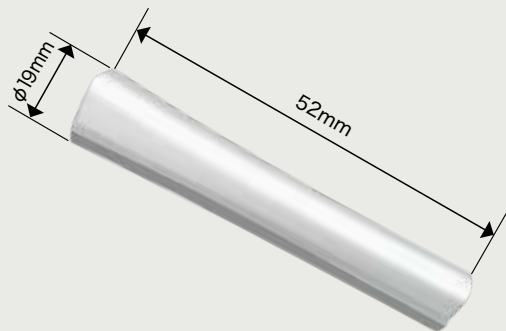
【Material: Chrome molybdenum steel】



【Model with record of use】

XY-120PLUS

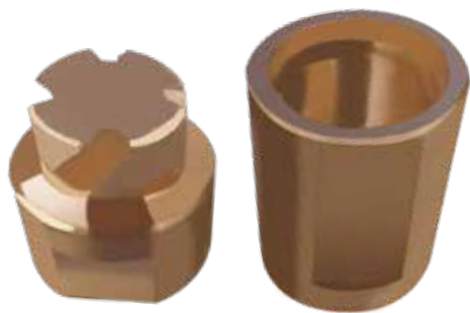
Models for Machining Parts for Hand and Power Tools



Grip sleeves
【Material: Stainless steel】



【Model with record of use】
XY-120PLUS



Special screws
【Material: Steel】

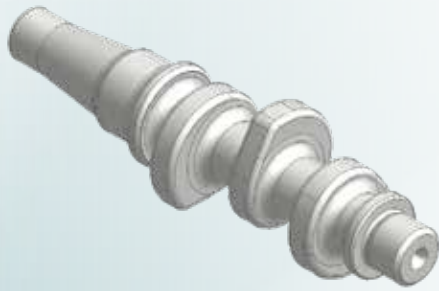


【Model with record of use】
XY-120PLUS

Made by TAKAMAZ:
Parts for
Construction
and Agricultural
Machinery



Models for Turning Work of Parts for Construction and Agricultural Machinery



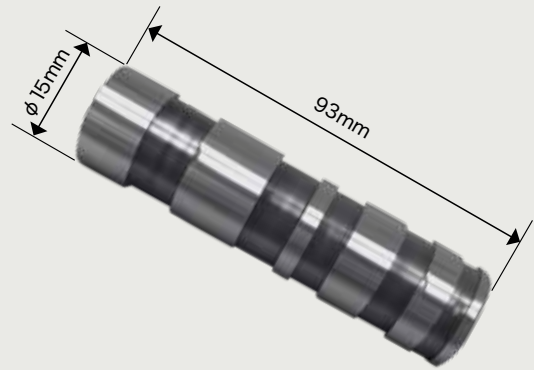
Camshafts

【Material: Carbon steel】



【Model with record of use】

XT-6



Spools

【Material: Carbon steel】



【Model with record of use】

XT-6M



Bolts

【Material: Carbon steel for machine-building】



【Model with record of use】

XT-6M



Body

【Material: Carbon steel】



【Model with record of use】

XT-6

Models for Turning Work of Parts for Construction and Agricultural Machinery



Feed hoses

【Material: Carbon steel for cold forging】



【Model with record of use】

XW-60



Retainers

【Material: Carbon steel】



【Model with record of use】

XT-8M



Fuel camshaft

【Material: Carbon steel for machine-building】



【Model with record of use】

XT-8



Ring piston

【Material: Bearing steel】



【Model with record of use】

XW-60

Models for Turning Work of Parts for Construction and Agricultural Machinery



Seats

【Material: Chrome molybdenum steel】



【Model with record of use】

XWG-3



Shafts

【Material: Carbon steel】



【Model with record of use】

XT-6



Pistons

【Material: Chrome molybdenum steel】



【Model with record of use】

XT-8



Pistons

【Material: Chrome molybdenum steel】



【Model with record of use】

XW-130 · XW-60

Head Office and Plant

■ TAKAMATSU MACHINERY CO., LTD.

• HEAD OFFICE & PLANT

1-8 ASAHIGAOKA HAKUSAN-CITY ISHIKAWA JAPAN. 924-8558
TEL +81-(0)76-207-6155 FAX +81-(0)76-274-1418

• ASAHI PLANT

4-13 ASAHIGAOKA HAKUSAN-CITY ISHIKAWA JAPAN. 924-0004
TEL +81-(0)76-274-0123 FAX +81-(0)76-274-8530

Overseas Bases

■ TAKAMATSU MACHINERY U.S.A., INC.

• CHICAGO HEAD OFFICE

1280 LANDMEIER ROAD ELK GROVE VILLAGE, IL 60007 USA
TEL +1-(0)847-981-8577 FAX +1-(0)847-981-8599

■ TAKAMAZ MACHINERY EUROPE GmbH

IM HÜLSENFELD 19, 40721 HILDEN, GERMANY
TEL +49-(0)2103-789-4882 FAX +49-(0)2103-789-4883

■ TAKAMAZ MACHINERY (HANGZHOU) CO., LTD.

• HANGZHOU HEAD OFFICE

NO.6800, JIANGDONG 3RD ROAD, JIANGDONG INDUSTRIAL PARK,
XIAOSHAN, HANGZHOU, ZHEJIANG, CHINA
TEL +86-(0)571-8287-9709 FAX +86-(0)571-8215-3732

■ TAKAMATSU MACHINERY (THAILAND) CO., LTD.

• BANGKOK HEAD OFFICE

888/59 MOO 9, TAMBOL BANGPLA, AMPHUR BANGPLEE,
SAMUTPRAKARN PROVINCE, THAILAND
TEL +66-(0)2-136-7831 FAX +66-(0)2-136-7834

■ PT. TAKAMAZ INDONESIA

JL. FESTIVAL BOULEVARD BLOK AA 11 NO.30,31 GRAND WISATA TAMBUN, BEKASI 17510
TEL +62-(0)21-8261-6431 FAX +62-(0)21-8261-6430

■ TAKAMAZ MACHINERY MEXICO, S.A.DE C.V.

AVENIDA DE LOS INDUSTRIALES 522, LOCAL 4, INDUSTRIAL JULIAN DE OBREGON,
37290 LEON, GUANAJUATO MEXICO
TEL +52-477-784-0468

■ TAKAMATSU MACHINERY VIETNAM CO., LTD

NO.76 M HOANG QUOC VIET, PHU MY WARD, DISTRICT 7, HO CHI MINH CITY, VIETNAM
TEL +84-(0)28-3620-5671 FAX +84-(0)28-3620-5673

Affiliated Companies

■ HANGZHOU FEELER TAKAMATSU MACHINERY CO., LTD.

NO.6800, JIANGDONG 3RD ROAD, JIANGDONG INDUSTRIAL PARK,
XIAOSHAN, HANGZHOU, ZHEJIANG, CHINA
TEL +86-(0)571-8215-3760 FAX +86-(0)571-8286-5311

TAKAMAZ



<https://www.takamaz.co.jp>



Scan this QR Code
for more details. ▶

